

August Construction Update

AUGUST, 9 2018



High School

LMC drywall has been hung, mudded and painted.



LMC door frame entrance being installed.



High School

Staining of the exterior precast at the athletic addition.



Middle School

Exterior framing and sheathing underway on the entrance area.



Framework for the back wall of the stramp by the renovated entrance.



Middle School



Lakeview Elementary

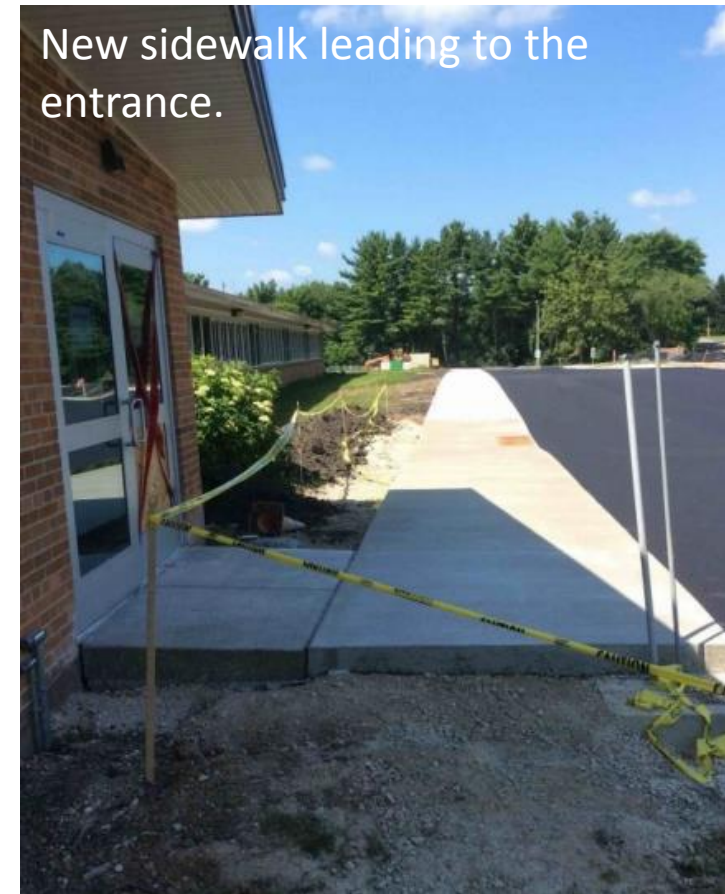
Casework installation in the main office.



Center wave has been installed in the LMC.



Lakeview Elementary



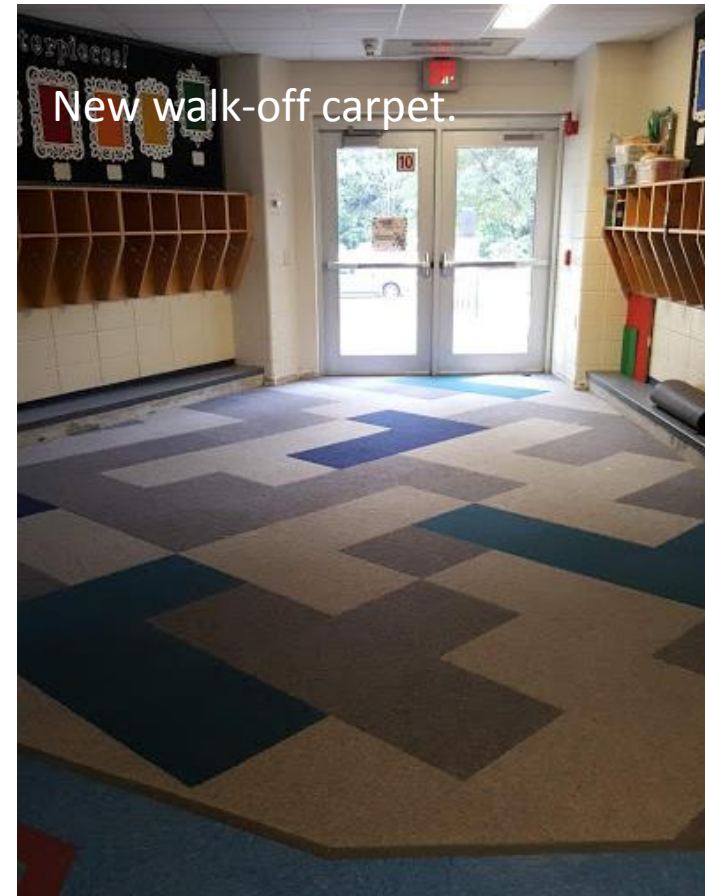
Lincoln Elementary



Lincoln Elementary



Washington Elementary



Washington Elementary

